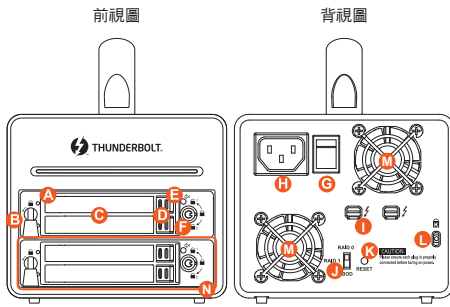


DX4-TB2 快速安裝導引

產品示意圖與配件表

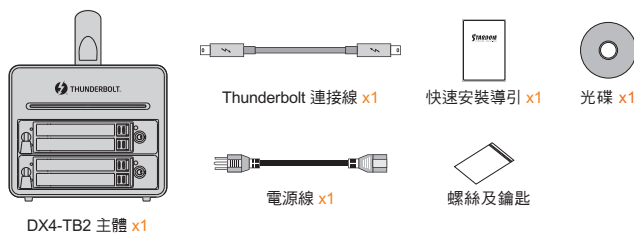


- A 硬碟讀取燈
- B 托盤把手
- C 硬碟抽取盒把手
- D 頂出按鍵
- E 靜音按鈕
- F 硬碟抽取盒鑰匙孔
- G 電源開關
- H 電源插座
- I Thunderbolt 連接埠
- J RAID 切換鈕
- K RESET 按鈕
- L 防竊鎖孔
- M 風扇
- N X tray

NOTE 使用者切勿自行拆除X tray，尤其是在通電時期，可能會導致資料毀損。若因此造成儲存在DX4-TB2的資料損毀或遺失，STARDOM 將不負任何的責任。

打開包裝外盒後，包裝內容應包含下列組件：

產品配件表



請先確認相關配件與產品本身是否有受損或是缺少配件，若有任何疑問，請與您的經銷商或業務人員聯絡。

V1.0 (Apr. 2017)

1

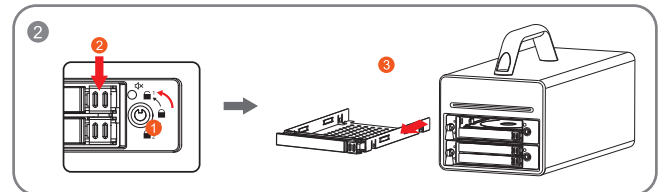
燈號說明

狀態	HDD LED	蜂鳴器
無硬碟	紅燈恆亮	鳴叫 1 秒 (持續，間隔 1 秒)
硬碟閒置	藍燈恆亮	——
資料存取	藍紫交替閃爍	——
RAID failed / HDD failed	紅燈恆亮	鳴叫 1 秒 (持續，間隔 1 秒)
資料重建 (來源)	藍燈恆亮	——
資料重建 (目標)	紅燈閃爍	——

硬體安裝

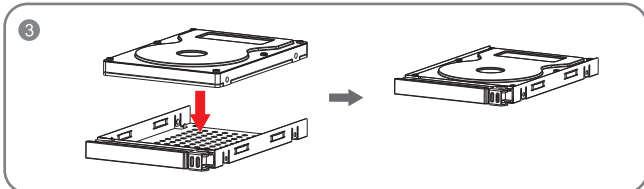
請參照下列步驟，完成 DX4-TB2 的硬體安裝：

1. 請使用背板上的RAID切換鈕選擇RAID模式，原廠預設值為JBOD。
2. 將硬碟抽取盒鑰匙孔逆時針旋轉至圖示 的位置，如示意圖壓下頂出按鍵，取出硬碟抽取盒。

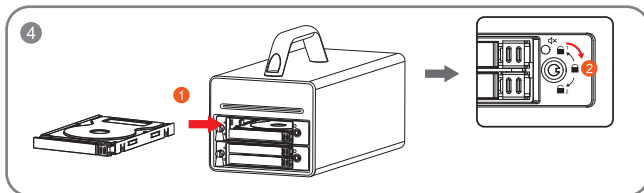


2

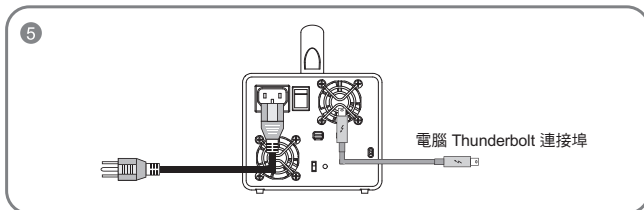
3. 將您的硬碟安裝至抽取盒上。



4. 完成後請插回抽取盒，並確認抽取盒確實插入且固定在適當位置；將硬碟抽取盒鑰匙孔逆時針旋轉至圖示 的位置。



5. 將相關連接線接上，最後接上家用電源。



6. 將機體背面的電源開關打開。

7. DX4-TB2 預設值為 JBOD，強烈建議調整為 RAID 0，以形成 RAID X 模式。

- a. 如機器啟動後，抽取盒燈號會由「紅燈恆亮 > 熄滅 > 藍燈恆亮」燈號，即為完成機器安裝設定。
- b. 如機器啟動後，抽取盒燈號如出現「紅燈恆亮 > 熄滅 > 藍紫閃爍」燈號，請使用頂針插入「重置鍵」3秒後鬆開頂針，待燈號由「藍紫閃爍」燈號轉變為「藍燈恆亮」燈號時，即為完成機器安裝設定。

8. 機器安裝設定完成後，即可依需求設定RAID模式，請參考「產品使用注意事項/4.切換RAID設定的標準程序」，做RAID模式切換設定。

3

產品使用注意事項

1. 若想得到較佳的使用效能與選購硬碟的便利性，建議使用規格及廠牌相同的 2.5 吋硬碟。若 RAID 1 模式下，當其中有任何一顆硬碟毀損時，新更換的硬碟容量需大於或等於原硬碟容量。
2. 第一次使用本產品進行設定時，資料會被全數清除。請於硬碟置入前，確認硬碟已備份，避免資料遺失。
3. DX4-TB2 開機下在電腦進入系統待命或是休眠狀態時，會一起進入待命狀態。當電腦恢復正常運作，則 DX4-TB2 也會一併回復到正常使用狀態。
4. 切換 RAID 設定的標準程序：
 - 步驟1：請在 DX4-TB2 連線到電腦後，一併打開電腦和 DX4-TB2 的電源開關。
 - 步驟2：請在藍燈恆亮時，將在 DX4-TB2 背板上設定 RAID 設定的「切換開關」調到你所要的設定位置。
 - 步驟3：請使用頂針插入「重置鍵」，待前面板抽取盒上的閃爍藍紫燈結束、並轉成恆亮藍燈後鬆開頂針。
 - 步驟4：請您再做一次關、開 DX4-TB2 電源的動作後，您已經改變、並重新設定了DX4-TB2 的 RAID 模式。
5. RAID 模式一旦設定完成，若要進行切換，因切換過程中將會清除硬碟中的資料，請務必先將硬碟中的資料另行備份後再行切換。
6. 請勿將不同 X tray 中的硬碟交換使用，否則將會造成資料毀損。
7. 強烈建議除了使用 DX4-TB2 的資料儲存功能外，請針對重要資料備份到另一個儲存裝置上或遠端備份，雙重備份您重要的資料。若您儲存在 DX4-TB2 的資料損毀或遺失，STARDOM 將不負任何的責任。

感謝您使用 銳銳科技股份有限公司 的產品。

本手冊裡的資訊在出版前雖然已經被詳細確認，但實際產品規格將已出貨時為準；任何的產品規格或相關資訊更新，請您直接上 www.STARDOM.com.tw 網站查詢，或直接與您的業務聯絡窗口聯繫，本公司將不另行通知。

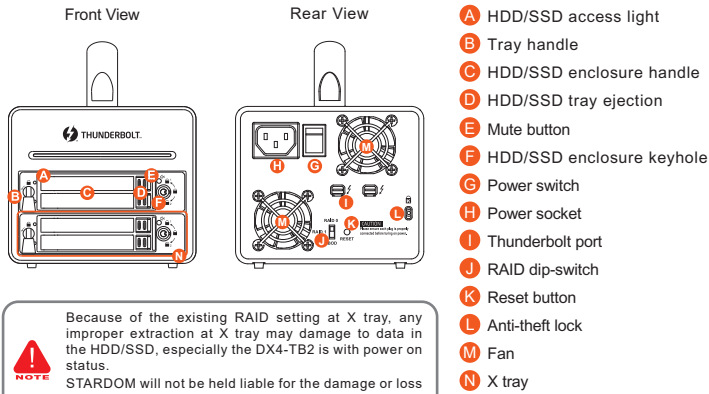
如果您對 銳銳科技 的產品有任何疑問，或是想獲得最新產品訊息、使用手冊或軟體，請您聯絡 services@stardom.com.tw，我們將儘速回覆您。

本說明相關產品內容歸 銳銳科技股份有限公司 版權所有

4

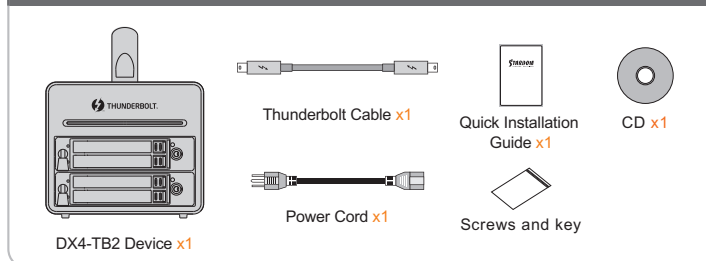
DX4-TB2 Quick Setup Guide

Product Illustration and Parts List



The following items should be included in the package upon opening

Product Parts List



Please check the included parts and the product itself for any damage or missing parts. If you have any questions, please contact the retailer or sales representative.

V1.0 (Apr. 2017)

1

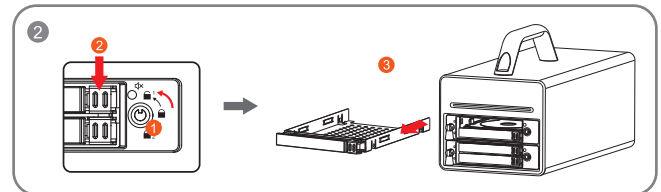
The Indication of HDD Status

Status	HDD LED	Buzzer
No HDD detected	Red light always on	1-second (Continuous, 1-second interval)
HDD idle	Blue light always on	— —
Data access	Purple & blue light Intermittent flashing	— —
RAID failed / HDD failed	Red light always on	1-second (Continuous, 1-second interval)
Rebuilding data - Source HDD	Blue light always on	— —
Rebuilding data - Target HDD	Red light flashing	— —

Hardware Installation

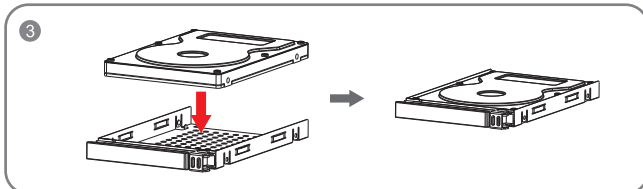
Please follow the steps below to complete the DX4-TB2 hardware setup process:

1. Choose the RAID mode with RAID dip-switch on the back panel. The default value is JBOD.
2. Please first release tray from turning lock-handle counterclockwise to the position, eject the tray.

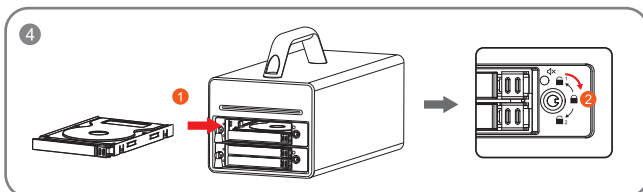


2

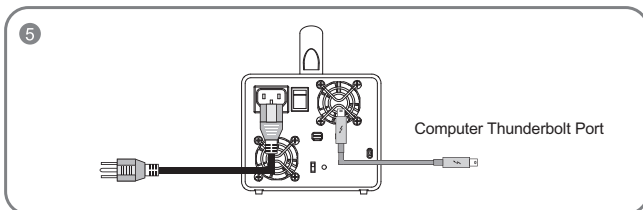
3. Mount the hard drive onto the removable tray.



4. After mounting two HDDs firmly, inset the tray back into bays properly, lock the tray from turning the lock-handle clockwise to the position.



5. Please connect the Thunderbolt Cable, and then connect AC/DC Adapter to the product.



6. Please turn on power.

7. The Default Setting is JBOD mode, user is recommended to use RAID 0 mode for your use with the RAID X advantage.
 - a. After turning on power, the HDD/SSD Indicator will be changed with the following sequence, Red > Off > Blue, and then, DX4-TB2 is ready for use.
 - b. In case if the HDD/SSD Indicator shows Red > Off > Blue Flashing, please use a pin to press the RESET Button for 3 seconds, and wait until the HDD/SSD Indicator is changed to Blue from Blue Flashing, your DR2-TB2 is then ready for use.
8. While your DX4-TB2 is ready for use, please follow the instruction of "4. The Standard Procedure to Switch RAID Setting" in the Important Notice and set the RAID mode to what you want. You could then start using your DR2-TB2 now.

3

Important Notice

1. We suggest you using 4 brand new 2.5-inch SATA hard drives with the same brand and model number for the best performance. When any one of the hard drives is failed, please ensure that the capacity of the new hard drive is the same or bigger than the original one.
2. Since DX4-TB2 will delete all data files in your two HDDs/SSDs at its first-time use, please be informed that you shall first save all your personal data files into a safe memory space before starting setting your new DX4-TB2 to avoid any data loss during your start-up process.
3. DX4-TB2 will be forced to get into SLEEP mode while your Mac Computer is in either IDLE or SLEEP mode.
4. The Standard Procedure to Switch RAID Setting:
 - Step 1: Please first connect DX4-TB2 to your Mac.
 - Step 2: Please set RAID Dip Switch to the position you choose.
 - Step 3: Please use the Key to press the hidden RESET key at the back-plate, hold and wait for the end of Blue-Purple LED blinking till a stable Blue light.
 - Step 4: Please turn off your DX4-TB2, and re-turn it on again. You now have reset DX4-TB2 with a new RAID mode successfully.
5. Once RAID mode has been set up, the switching of hard drives will lead to the removal of data from the hard disks. Please be sure to backup the data on the hard disk before making any switches.
6. Users are not allowed to exchange the two HDDs/SSD in the X Trays to avoid the serious damage to the data.
7. We strongly recommend backing up important data stored on the DX4-TB2 to another storage device or a remote site. STARDOM will not be held liable for the damage or loss of data you stored on the DX4-TB2.

Thank you for choosing this RAIDON product.

The information provided in this manual was checked before publication, but the actual product specifications may have changed before shipping; Latest product specifications and updates can be found at www.STARDOM.com.tw or through your sales representative. No separate notifications will be provided by our company.

If you have any questions about RAIDON products or would like to receive the latest product information, instruction manuals, or firmware, please contact services@stardom.com.tw for assistance.

All product-related content in this manual are copyrighted by RAIDON TECHNOLOGY, INC.

4